



Product Description

INDUSTRIAL EXPLOSION PROOF CLASS I, II DIVISION 1 GROUPS B,C,D,E,F,G.

The Explosion Proof UL Listed high performing WES3HTG-EXP radios offer the same great performance of our WES3HTG series in an explosionproof housing for use in extreme environments.

The WES3HTG-EXP product is designed for point to point and point to multi-point solutions with throughput up to 650Mbps available. 17dbi and 9dbi patch antenna options are available.

The WES3HTG-EXP is suitable for installation in a wide variety of IP camera, access control, and industrial automation systems.

The product uses a removable DIN rail clip that can be positioned on the side or back of its enclosure offering multiple installation options.

Product Features

- IEEE802.11ac compliant radio, 5GHz
- Mounts on Top Hat EN 50022 DIN rail
- Transmission Power Control, up to 30dBm output power
- Configurable for client / singlepoint host / multipoint host
- Secure transmission: WPA2 - AES or TKIP encryption
- Antenna alignment & site signal survey tools
- Distance adjustment for long range transmission
- Range of antenna options
- Passive midspan compliant PoE support
- MIMO technology providing 1.3 Gbps aggregate throughput



Specifications

Standards

IEEE Standards
 IEEE 802.3 10BASE-T, IEEE 802.3u 100BASE-TX
 IEEE 802.3ab 1000BASE-T, IEEE 802.3x Full Duplex
 IEEE 802.11a 5GHz, IEEE 802.11h ETSI DFS & TPC
 IEEE 802.11n MIMO

Radio

Frequency
 USA & Canada (FCC) U-NII3 5180 - 5240MHz, 5745 - 5825 MHz
 Europe 5500 - 5700 MHz
 Frequency Operation Auto-select
 User static selectable
 Dynamic Frequency Selection (ETSI DFS)
 Power Output 30dBm max ⁽¹⁾
 Transmit Power Control (ETSI TPC)
 Channel Bandwidth Spectrum Selectable 20, 40 or 80MHz

Antenna Options

5dBi
 17dBi
 Omni-directional
 PAT5M Directional Patch
 Dual polarization
 Beamwidth:
 Azimuth: Horizontal 30°, vert 33°
 Elevation: Horizontal 17°, vert 17°

System

Data throughput ⁽²⁾ HT40 HT80
 300Mbps 650Mbps
 Latency <10ms
 Encryption TKIP / AES encryption up to 128 bit

Power Method

Direct Wiring 120 VAC

Mechanical (unit)

Casing IP66/TYPE4 protection
 Dimensions (L x W x D) 286mm x 235mm x 145mm
 11.25" x 9.25" x 5.69"
 Weight 16.24kg / 35.8lb
 Installation Wall-mount or pole-mount

Environmental

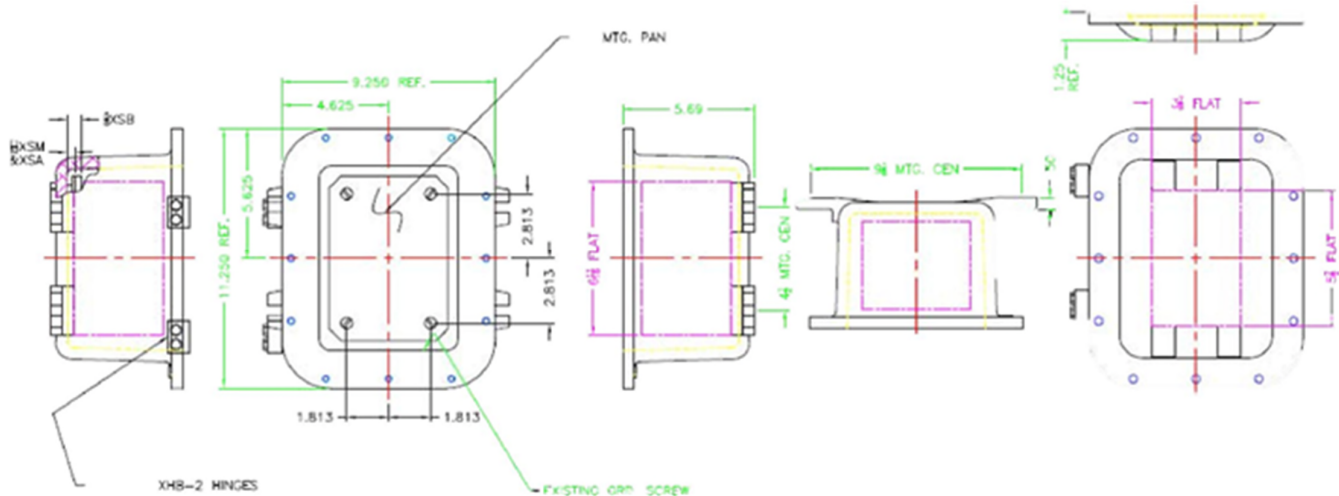
Operating Temperature -40° ~ +74° C / -40° ~ +165° F
 Storage Temperature -40° ~ +90° C / -40° ~ +194° F
 Operating Humidity 5 to 95% non-condensing
 Mean Time Between Failure (MTBF) > 1,500,000 Hours

Connectors

10/100/1000Mbps Electrical 1 x RJ45

Approvals

FCC Part 15 Subpart C Class B
 CE Class B
 EN 55024
 (IEC61000-4-2,3,4,5,6,8,11)
 EN 55022 (CISPR 22)
 EN 60 950: 1992+A1: 1993+A2:
 1995+A4: 1996+A1: 1997
 EN 300 328-2
 EN 300 826
 EN 301 489-17
 EN 301 893
 R&TT Directive (1999/5/EC)
 Electromagnetic Immunity
 Electromagnetic Interference
 (Conduction & Radiation)
 Low Voltage Directive



Part Number Configurator

WES3HTG-EXP-CA

A: US Power Plug & Firmware
 B: UK Power Plug & EMEA Firmware
 C: Euro Power Plug & EMEA Firmware
 E: Australian Power Plug & Firmware

1. Territory specific.
2. Assumes ideal RF environment with max signal rates & within receive sensitivity specification.

Due to ongoing technological improvements, product specifications are subject to change without notice. KBC is not liable for any errors, omissions or changes of any description of the goods contained herein. This information is for the sole purpose of identifying the products and KBC makes no warranty that the products conform to any description contained herein. Do not rely solely on any representations, statements, or assertions concerning these Products contained herein.